



PO Box 480
Lawai, HI 96765

2-4035 Kaunualii Hwy
Koloa, HI 96756

Phone: (808) 742-9294
Fax: (808) 742-6628
E-mail: mail@kahiliedu.org

Schedule of Events

- February 15 — 9 AM Committees meet at the School Library to work on the "Self Study" in preparation for our school evaluation this spring.

GOD'S BLESSINGS CONTINUED...

(Continued from page 2)

- We have a wonderful group of students and supportive parents this school year. The spiritual, as well as the academic, atmosphere on our campus is very encouraging.
- We have a beautiful, newly renovated kitchen that has already been used by our church family, and is currently being used for our high school "Life Skills" class during the school day and a women's health class on Monday nights.

- Even though our budget is very tight, God continues, with your help, to provide for our financial needs. We are so very grateful for our church family and your support of Christian Education.

"We have nothing to fear for the future, except as we shall forget the way the Lord has led us, and His teaching in our past history."

Life Sketches 196



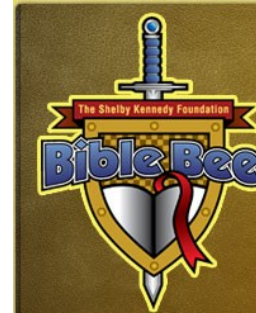
February 2009

Sun	Mon	Tue	Wed	Thu	Fri	Sat
1	2	3	4	5	6	7
8	9	10	11	12	13	14
15 Evaluation Self-Study	16 Day off	17 SB Meeting	18	19	20	21
22	23	24	25	26	27	28



Kahili Echoes

KAHILI TO HOST LOCAL BIBLE BEE



Kahili Adventist School has the honor of being asked to host the first annual Kauai Bible Bee Contest in September. This Bible Bee, open to students, age 7 to 18, is sponsored by a non-denominational foundation in southern California. The purpose of the Bible Bee is to promote godly character in children and youth by motivating them to memorize passages and facts found in the Bible. Our ultimate goal is to equip the next generation to be bold ambassadors for Jesus Christ. In addition, partici-

pants could win up to \$100,000 in scholarship money.

Those wishing to participate in the Bible Bee Challenge can enroll by going to the Kahili web site (www.kahiliedu.org) and click on the Bible Bee link, beginning February 15th. The first of May, those who have enrolled will receive a study guide to help them know what portions of the Bible they need to study and how to prepare for the local Bible Bee which will be held on September 12.

Top winners of this nationwide competition will then go to Washington, DC for the final Challenge.

Please check out the web site—there is a lot of information available. And please invite your neighbors and friends to participate.

Special points of interest:

- REGISTER TO PARTICIPATE IN THE FIRST ANNUAL BIBLE BEE
- WE HAVE NOTHING TO FEAR FOR THE FUTURE...

We're on the Web!
www.kahili.org

In This Issue

RECYCLING MAGIC	2
GOD'S BLESSINGS	2
PARENTS' CORNER	3
THANK YOU	3
CONTINUED BLESSINGS	4
SCHOOL CALENDAR	4

“quoted” "Kind words can be short and easy to speak, but their echoes are endless."
Mother Teresa

WHY RECYCLE



This week, our students learned a little bit about why it is important to recycle while watching an hour-long show presented by Timothy Wenk, a New York based "magician who has performed internationally as well as nationally including at the White House.

Mr. Tim combines entertainment with an environmental message and reinforces the recycling and environmental lessons we are already teaching our students.

During the presentation, Mr. Wenk "makes" a seemingly

ordinary bottle of soda vanish into thin air. However, he told the students, "You can't make trash disappear in the real world; the only way to do that is to recycle."

At Kahili, the Kindergarten and First Grade Classroom are already recycling water bottles and aluminum cans. They would be happy to help you recycle as well. You can contribute to this class project by calling Mr. and Mrs. Kuzma, or you may bring your recycle contributions to the school.

GOD CONTINUES TO BLESS

We say, "God is good, all the time and all the time, God is good. Here are just a few of the ways God has poured out His blessings at Kahili in the past few months:

- We have met our "Temperature Rising" goal of \$50,000.
- We have had an out-pouring of people willing to do a spring Week of Prayer for us (thanks to Mr.

Weeks of Prayer during the end of this school year.


- We have a couple from Maine, Bob and Pat Manning, who will be on campus until almost the end of April, volunteering their time to help make our campus a better place.
- A group of 40+ young people from Southern Adventist University will be on our campus for a week, spending time with our students and helping as needed. They will also be work-

(Continued on page 4)

HAVE YOU REMEMBERED TO COUNT YOUR BLESSINGS LATELY?



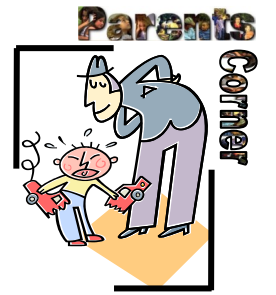
Kuzma); consequently, we will be holding 3



Emphasizing the Importance of Reading -- Part 2

- ▶ Children value the things their parents value: let your children see you reading.
- ▶ Plan a weekly Family Reading Night or an evening when you go to the public library each week. Show you value reading by maintaining the routine.
- ▶ Give books as gifts. For young children, give stuffed animals or book characters as gifts.
- ▶ Visit the web sites of your child's favorite characters, stories and authors.

©Copyright EducationWorld.com



Thanks for caring about Kahili!

PUSH LAWN MOWER NEEDED

Kahili Adventist School is looking for a small push mower to mow the area in front of the school that is too small to mow with the large riding mower. If you know

of someone who has a small mower they would be willing to donate, please let them know of our need.

THANK YOU

Thanks to some very generous friends, we now have a portable dishwasher for our newly renovated kitchen.

In addition, another classroom has been completely repainted by a group of graduate students from WA and ID. We have also received a donation to buy the

paint for repainting our library. If you would like to help with our Kahili renovation project, we only have 2 classrooms left to paint, and we already have paint for one of them. Your help is greatly appreciated!



Web sites for learning and fun -- for kids and parents together..

This week's Site to See:

Math Flashcard Game
<http://www.surfnetkids.com/games/math-fc.htm>

Add, subtract, or multiply to beat the clock. (Grades 3-up)